

▼ annual meeting, bring the family, pg 1

▼ understand the fixed charge, pg 2

▼ meet the Westholm recipients, pg 3

▼ read the board meeting summary, pg 4

Don't Miss Your Annual Meeting

Check out what is in store at CLP's 2018 Annual Meeting of the Membership! This year's meeting will be held on Wednesday, April 18th, at the Two Harbors High School.

4:45 pm: Doors open and all CLP Members can begin to register for the business meeting. Registration will close promptly at 6:00 pm.

4:45 pm - 6:15 pm: Two Harbors Lion's Club Sloppy Joe Supper. Don't want to cook? Bring the whole family for a hearty supper of Sloppy Joes. While you are eating supper, you can take in the live entertainment by the Two Harbors Ukulele Group (THUGS)!

6:15 pm to 7:15 pm: Two lifeguards will be on duty to let kids swim while the adults attend the business meeting (youth under 10 years of age must be accompanied by an adult). A movie will also be playing, during the meeting, for the kids.

6:15 pm: The business meeting begins. This is the part of the evening where you learn more about what is happening at your electric co-op, and why your Board of Directors make the strategic decisions they make. In fact, you will even get to vote in the director elections. This year, District 3 and District 4 have directors up for election.

Immediately following the business meeting, all registered members will have a chance to win some great prizes. We will also announce the winners of the youth bicycles!

Don't miss your Annual Meeting of the Membership. It is a great evening, and you may just learn something you did not know about your electric cooperative. Member account number six hundred thirteen thousand five hundred twenty three.

Director Jim Anderson

Three Cheers For Jim!

It is with mixed emotions that we announce the retirement of Jim Anderson from the CLP Board of Directors. Jim has been a CLP member for 66 years, and he dedicated 28 of those years serving as your District 3 Board Member.

This is not a surprising run, as Jim has displayed the same kind of track record with his 31-year career with Reserve Mining and 41 years with the Sons of Norway. Jim was also a long-standing Fire Warden in Silver Creek Township, just to name a few of his many accomplishments.

In every one of these commitments, Jim has brought dedication, humility and an unparalleled sense of humor. He has a willingness to compromise in order to reach a desired outcome of success. Jim personally worked tirelessly to help make the Co-op a healthy, strong and vibrant organization.

Jim looks forward to spending his free time with his children, his grandchildren and the great grandchildren he can't seem to stop bragging about! Jim, you have been an inspiration. Your commitment to CLP and its employees will truly be missed.





Watts News

Understand The Fixed Charge

Steve Wattnem, General Manager/CEO

Dear Member:

At their February 2018 Board meeting, your Co-op Light & Power (CLP) Board of Directors unanimously voted to increase the consumer fixed charge by \$1 per month for each consumer rate class.

Effective May 1, 2018, CLP members in each consumer rate class will notice this \$1 per month change on their bill. Member account number six hundred fifty one thousand two hundred twelve.

In 2012, a formal Cost of Service Study was performed by an independent engineering firm, Power Systems Engineering. As a result of that 2012 rate study, Power Systems Engineering advised CLP to increase the consumer fixed charge from \$16 to \$30 per month. At that time, your CLP Board of Directors felt that the increase was too drastic to pass on to you, our member, all at one time. Subsequently, your CLP Board of Directors has voted, periodically, to make small increases to the fixed charge over the course of six years.

It is important to note that there are two main components to your monthly electricity bill. The first, and most obvious component, is the direct cost of

supplying you with the electricity you consume. Utilities call this the per kWh charge.

The second main component, is all of the other costs involved in actually getting that electricity out the door, so to speak. Utilities call this the fixed, basic, or base charge. These fixed costs include things like the cost of your transformer, and meter, the cost of consumer ac-

“Your electric co-op MUST stand ready to provide every CLP member with electric service, 24-hours a day, whether a consumer uses electricity or not.”

counting, and any other costs associated with paying for the infrastructure used to transfer the energy from its original source to your home or business.

The monthly fixed charge is met with mixed feelings by our members, and we certainly understand that. Some members have grieved that they do not feel they should have to pay the fixed charge because they use little or no energy at all; and that, ladies and gentlemen, is exactly why we have a fixed charge. Your electric co-op MUST stand ready to provide

every CLP member with electric service, 24-hours a day, whether a consumer uses electricity or not. Furthermore, regardless of how much energy each member consumes, these fixed costs remain the same.

CLP, along with utilities across the nation, are seeing flat, if not declining energy sales. Reasons for this may include the economy, energy conservation, on-site generation, or simply tightening of the belt. Regardless of the reason for consumers using less energy, all of these consumers still remain dependent on CLP’s electric grid, and there are fewer kWh sales to pay for the electric grid’s sustainability, i.e., fixed costs.

We understand that any price increase is going to have an impact on your pocketbook. Know that your CLP management has done some belt tightening of its own; and, we will do everything we can to keep your rates stable in the years to come.

Should you have any questions about the monthly fixed charge, or any of your electric rates, I invite you to contact me at 834.2226 or 800.580.5881. I will do my best to put your mind at ease.

Call Before You Dig

800.252.1166
it’s the law!

Call 800.252.1166 to locate underground wires.

You must call at least 48-hours in advance before any excavations (this notice does not include weekends, holidays or emergencies).

CLP will only locate the underground wires that are owned by CLP, we do not locate or take responsibility for locating wires beyond the meter location.



PowerLines

April 2018 - Vol. 20, Issue 4
OFFICIAL PUBLICATION OF
Cooperative Light & Power
Association of Lake County
1554 Highway 2 • P. O. Box 69
Two Harbors, MN 55616
www.clpower.com
CLP Office: 218-834-2226
CLP Toll Free: 800-580-5881
Power Outage (24/7): 800-927-5550
Winter Business Hours:
Monday - Friday 7:30 a.m. - 4:00 p.m.

Important Contacts

OFFICERS AND DIRECTORS

Peggy Kuettel, President, District 1
218-525-2155

Robert Nikolai, Vice President, District 5
218-353-7332

Alis Stevens, Secretary, District 4
218-226-8744

Scott Veitenheimer, Treasurer, District 2
218-834-5138

Jim Anderson, Director, District 3
218-834-3576

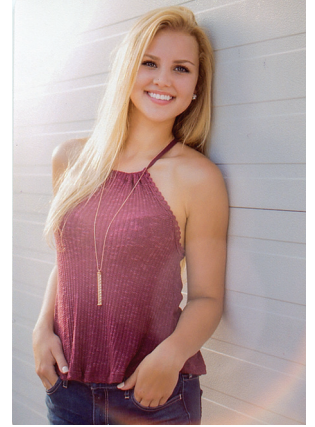
2017 Westholm Scholarship Winners

Each year, Co-op Light & Power offers scholarships to the children of its members. Six awards are given away, each in the amount of \$1,000. The recipients' parents must be a CLP member to qualify. Member account number seven hundred four thousand two hundred sixty five. One male and one female student are chosen from both Two Harbors High School and Silver Bay High Schools. Member account number six hundred forty seven thousand three hundred forty three. The other two scholarships are given to a male and female student outside of these schools. Note: due to limited application submissions, the 2017 criteria was not fulfilled. The 2017 Westholm Memorial Scholarship winners were:



Benjamin Hedin
Tartan Senior High
Son of
Tim and Lora Hedin

Alyssa Ruberg
Two Harbors High School
Daughter of
Greg and Jen Ruberg



Mahtahn Jenkins
Two Harbors High School
Son of
J. Cameron and Esther Jenkins



Jeffrey Lindgren
William Kelley High School
Son of
John and Julie Lindgren



Zachary Lewis
William Kelley High School
Son of
Eric and Nancy Lewis



Strawberry Sour Cream Jello

From the Kitchen of: Lori Walewski

- | | |
|----------------------------|-----------------------------|
| 1 ½ cups boiling water | 8 oz. can crushed pineapple |
| 6 oz. strawberry jello | 1 cup sour cream |
| 16 oz. frozen strawberries | |

Add boiling water to jello and stir until dissolved. Then add frozen strawberries and mix gently. Chill until slightly congealed. Mix in pineapple. Put half of mixture into a lightly oiled 6 cup mold. Chill slightly. Fold sour cream into remaining jello mixture. Pour into mold on top of first layer. Chill until set.

Submit your favorite recipe! If your recipe is printed in an issue of "Powerlines" you will receive a \$10 credit on your electric bill.

Co-op Connections Corner

Featured Business:

Cedar Coffee Company

1130 11th St

Two Harbors, MN 55616

218-834-2117

Offer Details: Get 10% off your entire order when you show your Co-op Connections Card. May not be used with any other offer or coupon.

To find participating businesses, please visit www.connections.coop for full details!

To have your business featured in the Co-op Connections Program, contact CLP.

Read Your Board Meeting Summary

A regular meeting of the Board of Directors was held on February 22, 2018. All directors were present at the time the meeting was called to order at 9:38 a.m.

A motion was made and seconded to approve the minutes from the meeting held on January 25, 2018, with corrections noted. Motion carried.

A question was posed to the Board of Directors, should we increase the fixed charge by \$1.00 to make the fixed charge per month, \$30.00? After much discussion a motion was made and seconded to increase the fixed charge by \$1.00 effective May 1, 2018. All directors voted aye, no nay. Motion carried.

At last months meeting, the Board of Directors was exposed to the Local

Democracy documents that need to be approved in their final form. These documents authorize the board to be the first line of adjudication should anyone who has a DG System, Distributed Generation, have a complaint. A motion was made and seconded to approve the presented schedules and filings. Upon a role call vote, all directors voted aye, no nay. Motion carried.

Darrick Moe from MREA visted the Board of Directors in the afternoon to discuss any issues that are of interest to the Board of Directors. He mostly talked about legislative items and the Public Utilities Commission.

There being no further business to come before said meeting, adjournment was called for at 4:08 p.m. with a motion and a second. Motion carried.

Dates to Know...

- Apr 16:** Cookies and coffee in CLP's lobby
- Apr 18:** CLP Annual Meeting
- Apr 19:** CLP Board Meeting
- Apr 25:** CLP bills due
- May 7:** CLP summer hours
M-Th 7:00 am - 4:30 pm
Fri 7:00 am - 11:00 pm

NOTE: CLP dates subject to change

DID YOU KNOW...

...you received a copy of the proposed By-Law changes. Please review them and return your ballot by April 13th at noon or bring the ballot with you to the Annual Meeting on April 18, 2018 at the Two Harbors High School.

Minnesota State Electric Inspector 7 a.m. - 8:30 a.m.
(Mon. thru Fri.) Lake County and parts of St. Louis County:
Richard Rue 218-834-9966

Anytime a homeowner or an electrical contractor installs wiring or performs other electrical work, Minnesota law requires an electrical inspector to perform a proper inspection of the work. A rough-in inspection must be made before any wiring is covered. A final inspection is also required. For more information visit dli.mn.gov and go to the Electrical home page.

TO REPORT AN OUTAGE:

Call CLP at 834.2226 or 800.580.5881 during business hours or 800.927.5550 after hours.

BEFORE calling, please check your breakers. If an outage is found to be on your side of the meter, you will be billed for a service call.

Year-to-date Financials

<u>JANUARY</u>	<u>2008</u>	<u>2017</u>	<u>2018</u>
Operating Revenue	\$ 793,367	\$ 1,271,776	\$ 1,386,216
Cost of Purchased Power	\$ 579,994	\$ 828,680	\$ 909,196
Other Operating Expenses	\$ 265,320	\$ 361,904	\$ 460,365
Total Cost of Electric Service	\$ 845,314	\$ 1,190,584	\$ 1,369,561
Operating Margin (Loss)	\$ (51,947)	\$ 81,192	\$ 16,655
Interest Income	\$ 8,604	\$ 8,879	\$ 14,470
Other Margins	\$ 18,217	\$ (23,757)	\$ (16,610)
Capital Credits	\$ -	\$ -	\$ -
Total Margins	\$ (25,126)	\$ 66,314	\$ 14,515
kWh Purchased	11,659,015	11,949,271	12,974,285
kWh Sold	9,977,415	11,411,539	12,451,781
Line Loss	N/A	4.50%	4.03%
Members Billed	5,800	6,073	6,134
Average kWh Used, Residential	1,617	1,641	1,795
Average Bill, Residential	\$ 127.56	\$ 171.66	\$ 185.16
Average Cost/kWh, Residential	\$ 0.0789	\$ 0.1046	\$ 0.1032
Interest Expense	\$ 34,302	\$ 29,122	\$ 37,797

SPOT YOUR NUMBER:

A \$20 electric credit is awarded each month to our faithful readers. Four account numbers are spelled out in each newsletter. If you find yours, notify CLP by the 25th of that month and a credit will be applied to your bill.

Credits claimed for February: none
Credits not claimed: Doug or Helen Frericks, Ron & Penny Morton, Daniel A. Sundvick, and Larry & Colleen Saur

OPERATION ROUND UP TOTALS:

February Donations: \$1,657.22

Year-to-date Donations: \$3,270.63

Thank you to all the participants! If you have questions about Operation Round Up, or would like to apply for a grant from the Fund, please contact CLP at 218.834.2226 or 800.580.5881, or visit our website at www.clpower.com.