

PowerLines

Your Trusted Energy News Source



September 2025 • www.clpower.com



Photo Credit: Ed Lee

▼ Submit Your Photos, pg 1

▼ Congratulations CLP Board Members, pg 2

▼ Minnesota Cold Weather Rule, pg 3

▼ Board Minutes Summary, pg 4

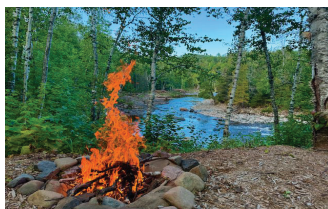
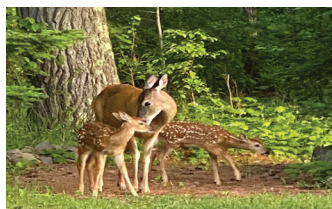
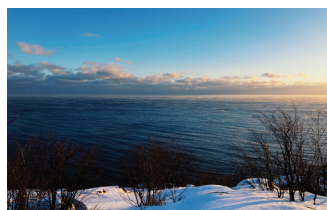
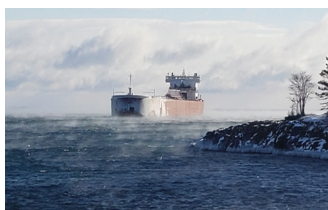
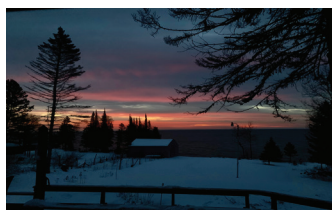
Want to see your photo featured in the CLP 2026 Calendar

We're inviting CLP members, employees, and directors to share their best North Shore photos for a chance to be included in next year's calendar! Submissions are open through **October 6, 2025**.

We're looking for images that highlight the beauty of the North Shore and Co-op Light & Power's service area. Each month's photo will be selected from the submissions received, with the winning image capturing the essence of that season.

Submission Criteria

- Electronic photos only, minimum 3300 x 2550 pixels at 300 dpi
- Scenery photos only (no people)
- Photos must be original and taken by the person submitting
- Horizontal orientation only (vertical photos not accepted)
- Include the location where the photo was taken





Listed left to right, CLP Directors Weideman, Peterson, Willemarck, Osadjan, & Josephson

Please join me in congratulating CLP Directors Jessica Willemarck, Kyle Weideman, Steve Josephson, and Roger Peterson on earning the National Rural Electric Cooperative Association (NRECA) Board Leader Certificate - Developing Effective Boardroom Decisions.

The class was held in August in Bloom-

CLP Board Members Complete Leadership Training

Carey Hogenson, Interim CEO

ington, prior to the annual Energy Issues Summit. The NRECA Board Leader Certificate is awarded only after a board member has achieved the Certified Cooperative Director (CCD) designation, which recognizes their mastery of the basic competencies required of cooperative directors.

The Board Leader Certificate program builds upon the CCD by offering a series of advanced courses that dive deeper into critical industry and governance topics. These courses are designed to strengthen decision-making skills, enhance strategic thinking, and prepare directors to meet the complex challenges facing electric cooperatives today.

In addition, CLP Director Justin Osadjan completed the Minnesota Rural Electric Association (MREA) New Director Orienta-

tion, also held before the Energy Issues Summit. This MREA seminar provides new directors with a comprehensive introduction to their role, including an overview of board responsibilities, affiliated organizations, the rich history of electric cooperatives and the rural electric program, legislative and regulatory concerns, and the competitive pressures and industry changes occurring today.

These directors' commitments to professional development reflect CLP's dedication to strong, informed leadership. Their efforts help ensure our cooperative continues to thrive while serving members with safe, reliable, and affordable energy.

Please join us in congratulating them on these important achievements!

School is Back in Session, so is the CLP Caring Closet

In 2021, Cooperative Light & Power (CLP) spearheaded the CLP Caring Closet initiative in our local schools. These dedicated closets offer essential items such as personal hygiene products, toiletries, and clothing to students who may not have access to these necessities at home, or who require them during the school day. Since its inception in 2021, the Caring Closets have experienced remarkable growth, largely due to the unwavering support of our members and the community.

As we approach the upcoming school year, it's imperative that our students have

the resources they need to excel in their studies. Once again, we are turning to you for your assistance in replenishing the supplies of the CLP Caring Closets. Your generosity will directly impact the lives of these students, ensuring that they can focus on their education without the burden of unmet essential needs. Member account number six hundred nineteen thousand seven hundred thirty-six.

The items listed to the right are the items specifically requested by the schools for the beginning of the '25-'26 school year. Thank you in advance for your support of this important community project.

2025-2026 CLP Caring Closet Wish List

- Lip Balm
- Lotion (travel size)
- Nail Clippers
- Face Wipes
- Shaving Cream
- Razors
- Hair Ties
- Flossers
- Tissues
- Toothpaste
- Deodorant
- Men's & Women's Underwear
- Leggings
- Sweat Pants
- Socks (all sizes)

Call Before You Dig

800.252.1166 or 811
it's the law!

Call 800.252.1166 to locate underground wires.

You must call at least 48-hours in advance before any excavations (this notice does not include weekends, holidays or emergencies). CLP will only locate the underground wires that are owned by CLP, we do not locate or take responsibility for locating wires beyond the meter location.



PowerLines

September 2025 - Vol. 27, Issue 9
OFFICIAL PUBLICATION OF

Cooperative Light & Power
1554 Highway 2 • PO Box 69
Two Harbors, MN 55616
www.clpower.com

CLP Office: 218-834-2226 or 800-580-5881
Power Outage (24/7): 800-927-5550

Summer Business Hours:
Monday - Thursday 7:00 a.m. - 4:30 p.m.
Friday 7:00 a.m. - 11:00 a.m.

CEO/Board Contacts

Carey Hogenson, Interim CEO
careyh@clpower.com or
(218) 830-0320 (Cell) or (218) 834-7903 (Direct)
Jessica Willemarck, Secretary, District 1
jwillemarck@clpower.com (218) 848-2220
Justin Osadjan, Director, District 2
josadjan@clpower.com or (773) 841-3975
Kyle Weideman, Vice-President, District 3
kweideman@clpower.com or (218) 834-3476
Steve Josephson, Treasurer, District 4
sjosephson@clpower.com or (218) 226-4163
Roger Peterson, President, District 5
rpeterson@clpower.com or (218) 226-8197

Minnesota Cold Weather Rule

Minnesota’s Cold Weather Rule (CWR) is a state law that protects residential utility customers from having electric or natural gas service shut off between October 1 and April 30. To protect your service from disconnection, you must make and keep a payment plan that you and your utility agree on. The utility must offer a payment plan that is reasonable for your household’s financial circumstances. You can set up a CWR payment plan any time during the CWR season.

You are eligible for CWR protection even if you rent the electricity or gas must be the primary heat source, and the utility account must be in your name. Member account number seven hundred five thousand two hundred sixty-two.

You and your utility must agree to a payment plan that is reasonable for your household. You can set up a utility payment plan

any time throughout the year.

If you have any concerns about paying your electric bill this winter, please contact us at (218) 834-2226 or (800) 580-5881 before the due date. If you receive a disconnect notice, fill out the Cold Weather Rule pamphlet and the payment arrangement form included. Please have the forms returned back to CLP prior to the disconnect date. For more information on CWR go to mn.gov/puc/consumers/shut-off-protection/

Need more help? Reach out to these resources:

- Arrowhead Economic Opportunity Agency (AEOA): (800) 662-5711
- Lake County Social Services: (218) 834-8400
- Salvation Army, Duluth: (218) 722-7934
- St. Louis County Social Services, Duluth: (218) 726-2000

ENERGY EFFICIENCY TIP OF THE MONTH

Take advantage of “shoulder months,” which refer to the transitional periods between peak heating and cooling seasons. During the fall, these milder weeks typically occur between September and November. Shoulder months offer a great opportunity to reduce home energy consumption as the need for extensive heating or cooling is reduced. Look for simple ways to boost indoor comfort without running your heating and cooling system. Use ceiling fans and open windows on breezy days to ventilate your home. On cooler days, add a layer of clothing and avoid running the heat.

Minnesota State Electric Inspector Information

Anytime a homeowner or electric contractor installs wiring or performs other electrical work, Minnesota law requires an electrical inspector to inspect the work properly. A rough-in inspection must be made before any wiring is covered. A final inspection is also required. For more information, visit dli.mn.gov and go to the electrical home page.

Lake County
Justin Barfuss
(612) 770-0925

St Louis County
Brian Johnson
(612) 757-9458

Recipe: Good Banana Bread

From the Kitchen of: Sue Hubbartt

Ingredients:

- ¾ c. sugar
- 6 tbs. oil
- 1 ½ tsp baking soda
- 2 eggs
- 1 ½ c. flour
- 2 Ripe bananas
- Dash of salt
- ½ c. milk
- Dash of vanilla

Instructions:

1. Mix bananas and sugar.
2. Add flour and beat for three minutes, then add eggs.
3. Combine milk, salt, and baking soda in a small bowl until soda dissolves.
4. Add to the banana mixture.
5. Add flour and oil.
6. Grease a bread loaf pan.
7. Bake for 60 minutes at 300 degrees.
8. Makes one large loaf or two small loaves.



60 Minutes



Read Your Board Meeting Summary

The regular meeting of the Board of Directors of Cooperative Light & Power (CLP) was called to order on June 25, 2025, at 9:00 a.m. at the CLP office. All directors, two staff members, and one member were present for the meeting. Member account number six hundred fifty-seven thousand three hundred fifty-two.

The following actions were taken at the June 2025 Board Meeting:

- Approval of the Agenda
- Approval of the Board Meeting Minutes
- Approval of the Consent Agenda
- Approval of Check Signing and Bank Authorization
- Approval of Board Resolution Secretary Certificate Form 674
- Approval of Board Resolution Secretary Certificate RD
- Approval of CLP Form 675
- Approval of CLP Equipment Material Rate Sheet 2025
- Approval of Resolution Approval of NextEra Energy Resources

Emmons-Logan Battery Storage Project
Member account number six hundred thirty-five thousand one hundred thirty-six.
The following reports were given:

- Finance Report
 - NISC Update
 - Filed ORU Form 990
 - MN Dept of Commerce report 7610
- Member Services/HR Report
 - Contributions
 - Member & Community Events
- Energy Services Report
 - Time of Use Meters Update
 - Zero Homes
- Operations Report
 - Discussion on the recent storms
- CEO Report
 - Meetings Update
 - Community Solar Garden
 - Emergency Response Plan
 - Remodel
- GRE Report
 - Reviewed Highlights from GRE
- Closed Session
- Adjournment was at 11:27 a.m.

Dates to Know...

- Sept 11:** Patriot Day
- Sept 22:** 1st Day of Autumn
- Sept 24:** CLP Board Meeting
- Sept 25:** CLP Bills Due
- Sept 29:** Winter Hours Begin

NOTE: CLP *dates subject to change*

To view a complete version of the latest CLP Board Meeting Minutes please go to:
<http://clpower.com/board-meeting-minutes>

TO REPORT AN OUTAGE:
Call CLP at 834.2226 or 800.580.5881 during business hours or 800.927.5550 after hours.

BEFORE calling, please check your breakers. If an outage is found to be on your side of the meter, you will be billed for a service call.

SPOT YOUR NUMBER:

A \$20 electric credit is awarded each month to our faithful readers. Four account numbers are spelled out in each newsletter. If you find yours, notify CLP by the 25th of that month and a credit will be applied to your bill.

Credits claimed for July:

James Hagen

Credits not claimed: Edd or Mary Leis, Brad or Margaret Houle & Kelsie Williams

OPERATION ROUND UP TOTALS:

July Donations: \$1,653.96

Year-to-date Donations: \$11,216.78

Thank you to all the participants! If you have questions about Operation Round Up, or would like to apply for a grant from the Fund, please contact CLP at 218.834.2226 or 800.580.5881, or visit our website at www.clpower.com.

Cooperative Light & Power is an equal opportunity provider and employer.

Year-to-date Financials

	<u>Jun-25</u>	<u>2015</u>	<u>2024</u>	<u>2025</u>
Operating Revenue	\$ 6,092,883	\$ 7,598,601	\$ 8,362,544	
Cost of Purchased Power	\$ 3,690,039	\$ 4,081,365	\$ 4,643,007	
Other Operating Expenses	\$ 2,267,327	\$ 3,489,511	\$ 3,303,153	
Total Cost of Electric Service	\$ 5,957,366	\$ 7,570,876	\$ 7,946,160	
Operating Margin (Loss)	\$ 135,517	\$ 27,725	\$ 416,384	
Interest Income	\$ 54,275	\$ 44,633	\$ 56,854	
Other Margins	\$ (44,825)	\$ (16,571)	\$ 9,013	
Capital Credits	\$ 15,613	\$ 5,605	\$ 12,135	
Total Margins	\$ 160,580	\$ 61,392	\$ 494,386	
kWh Purchased	56,856,053	52,381,268	56,369,199	
kWh Sold	53,804,185	50,257,246	54,364,788	
Line Loss	5.37%	4.05%	3.56%	
Members Billed	6,004	6,477	6,523	
Average kWh Used, Residential	1,184	1,074	1,173	
Average Bill, Residential	\$ 134.86	\$ 164.64	\$ 177.47	
Average Cost/kWh, Residential	\$ 0.1139	\$ 0.1533	\$ 0.1513	
Interest Expense	\$ 200,046	\$ 182,572	\$ 217,189	